

# icSpeech Professional Edition

## Multiparameter speech therapy software



icSpeech Professional Edition is multiparameter speech therapy software designed specifically for clinical use. It can be used for assessment, therapy and for the measurement of outcome.

### How it works

Often in speech therapy the patient relies on auditory feedback to modify their speech. By using icSpeech, the patient also has the advantage of visual feedback. With simple to use biofeedback displays the patient can view their speech in real-time, make corrections, and instantly see the result.

You can also make synchronised recordings and perform precise, repeatable measurements on a wide range of parameters, including speech, voice, airflow and lingual.

### Compatible input devices

icSpeech Professional Edition is compatible with a number of input devices. Its flexible USB architecture lets you choose any combination of devices to suit your specific need and budget.



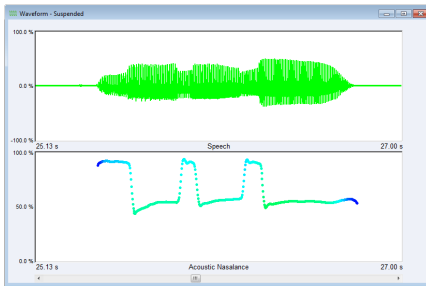
## Multiparameter data

Depending on the connected devices, the following parameters are available:

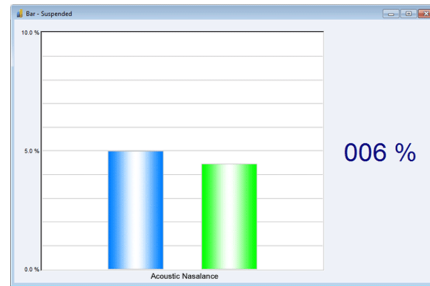
	Microphone	Nasality microphone	SNORS	Linguagraph EPG	Laryngograph EGG	Webcam	Frame grabber
Nasal speech		●	●				
Oral speech		●	●				
Combined speech	●	●	●				
Speech intelligibility	●	●	●				
Speech rate	●	●	●				
Speech spectrogram	●	●	●				
Speech FFT	●	●	●				
Speech LPC	●	●	●				
Pitch	●	●	●				
Voice intensity	●	●	●				
Voice-onset time	●	●	●				
Acoustic nasalance		●	●				
Nasal airflow			●				
Oral airflow			●				
Combined airflow			●				
Aerodynamic nasalance			●				
Aerodynamic ratio			●				
Auxiliary channel			●				
Alveolar tongue contact				●			
Palatal tongue contact				●			
Velar tongue contact				●			
Left lateral contact				●			
Right lateral contact				●			
Midline contact				●			
Lingual weight				●			
Lingual balance				●			
Lingual center of gravity				●			
Lx waveform					●		
Lx intensity					●		
Fx frequency					●		
Closed quotient					●		
Jitter					●		
Shimmer					●		
Facial video						●	●
Videofluoroscopy							●
Nasendoscopy							●
Stroboscopy							●
Ultrasound							●

## Displays

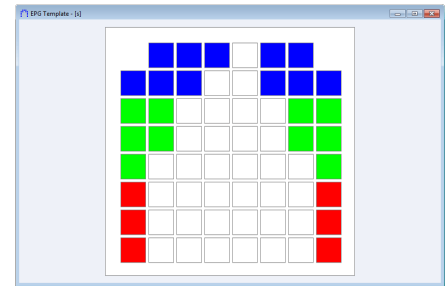
There are a number of ways in which the multiparameter data can be displayed. All displays can be synchronously viewed in real-time for biofeedback, recorded for off-line assessment or printed for hard copy. The data can also be exported to comma-separated values (CSV) files for further manipulation.



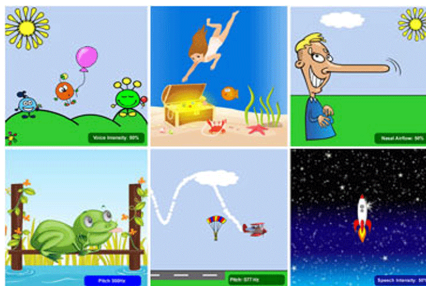
Waveforms



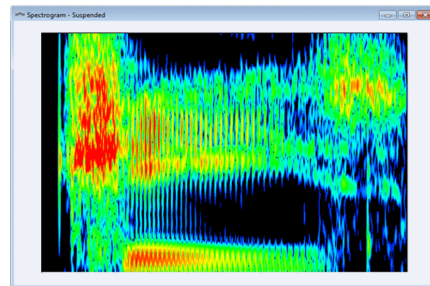
Bar Charts



Palatograms



Games



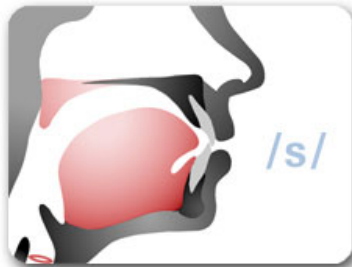
Spectrograms



Imaging

## Tools

A set of tools featuring state-of-the-art speech recognition technology provide valuable guidance and feedback to the patient. The automated speech intelligibility scorer, which has been independently verified to correlate with human scores, can also provide quantitative data on therapy outcome.



Pronunciation Coach



Minimal Pairs



Speech Intelligibility

## System requirements

<b>Operating Systems</b>	Windows 10, 8, 7, Vista or XP
<b>Computer</b>	Desktop, laptop or tablet
<b>CPU</b>	Minimum 1 GHz Intel® Pentium® or equivalent
<b>Memory</b>	Minimum 1 GB of RAM
<b>Storage</b>	100 MB of free hard disk space



[www.rose-medical.com](http://www.rose-medical.com)



[enquiries@rose-medical.com](mailto:enquiries@rose-medical.com)



+44 (0) 1227 781 627

**RoseMedical**  
Speech Therapy Software & Instrumentation